



# USING THE POSITIVE BEHAVIOR SUPPORT FRAMEWORK (AND DATA) FOR PROBLEM- SOLVING DISTRICT-WIDE

*Franklin Township Public Schools*

**Orvyl Wilson**

*Director of School Management*

**Sharon McNeil, MSW, LCSW, BCBA**

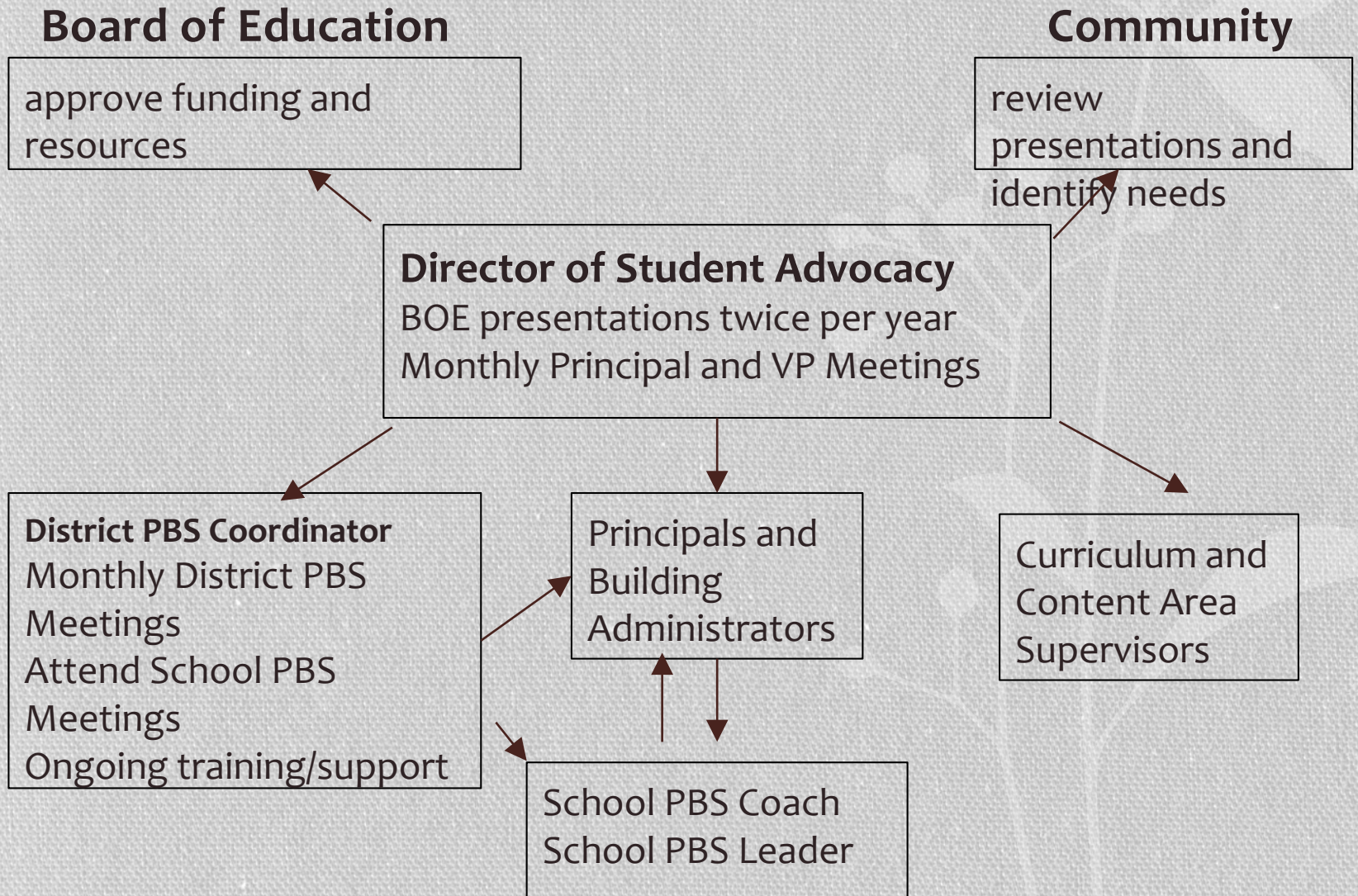
*Behavior Specialist, District PBS  
Coach*

# Franklin Township Public Schools, Somerset

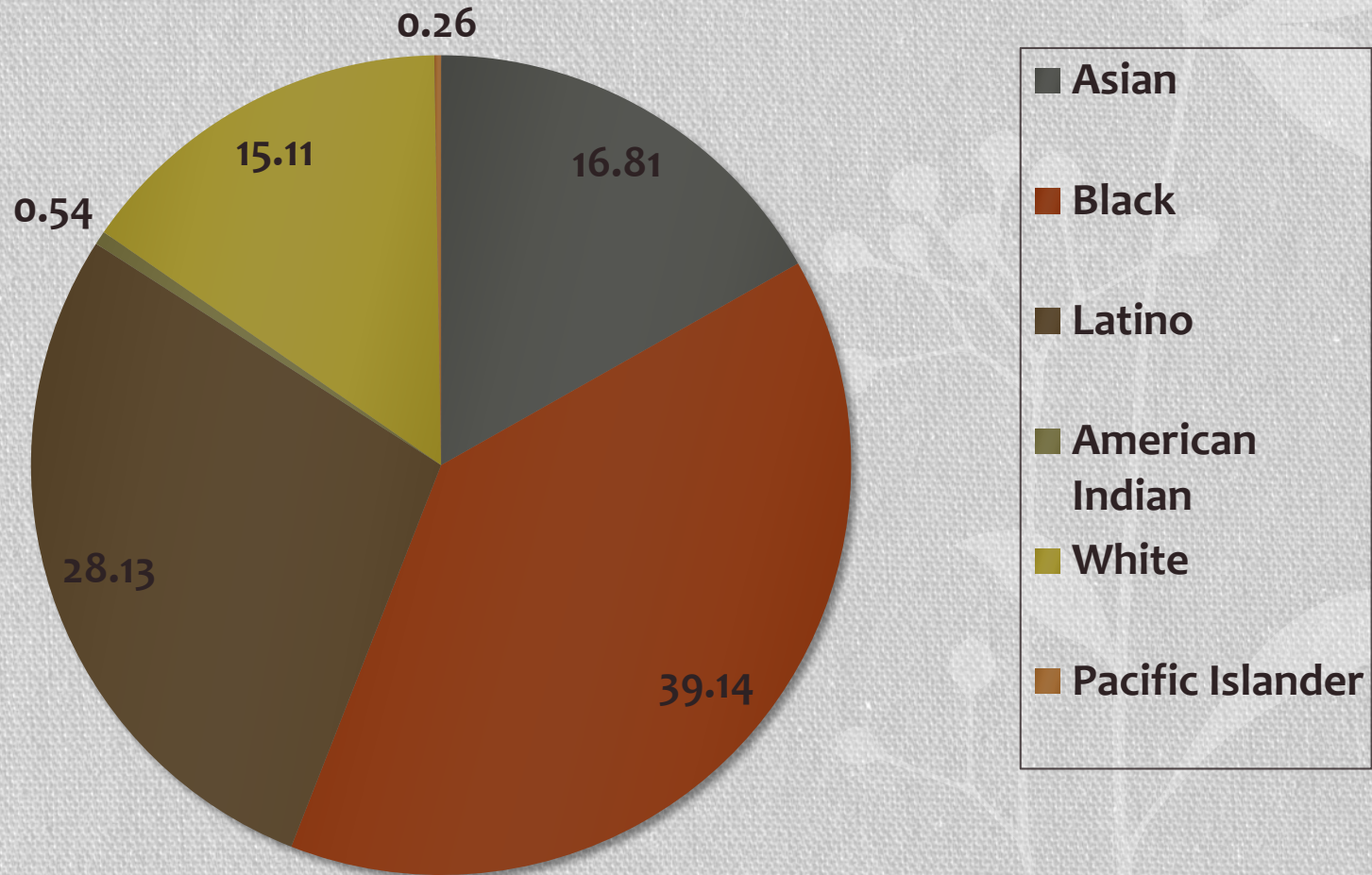
- Schools: 9 (plus a new elementary school to open 2018-2019!)
  - 6 Elementary Schools
  - 1 Intermediate 5<sup>th</sup> & 6<sup>th</sup> grades \* (will be 6-8 starting 2018-19)
  - 1 Middle School 7<sup>th</sup> and 8<sup>th</sup> grades \* (will be 6-8 starting 2018-19)
  - 1 High School
  - Alternative Middle School and Alternative High School
- Enrollment: 7,240
- F & R Lunch: 47%
- Multicultural demographic
- District Goals



# Support for District-wide PBS



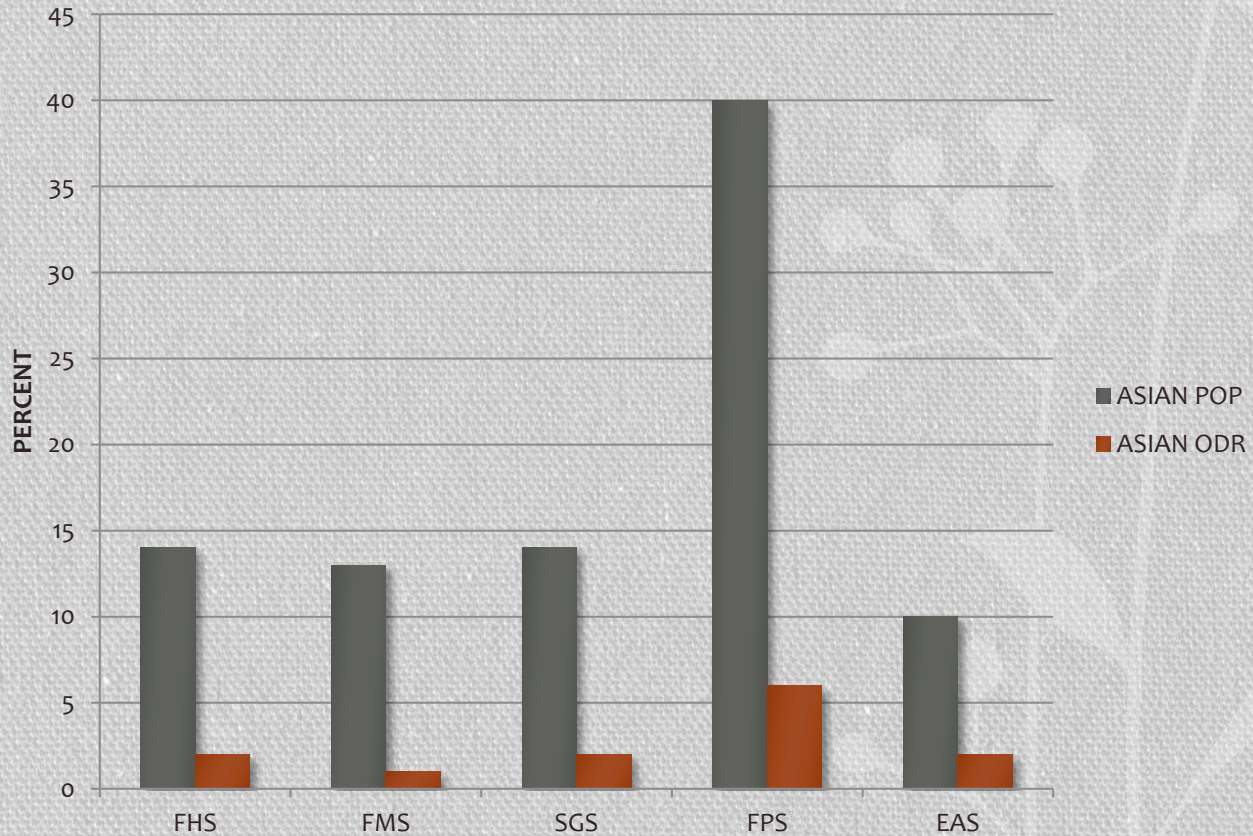
# Race/Ethnic Demographic Data



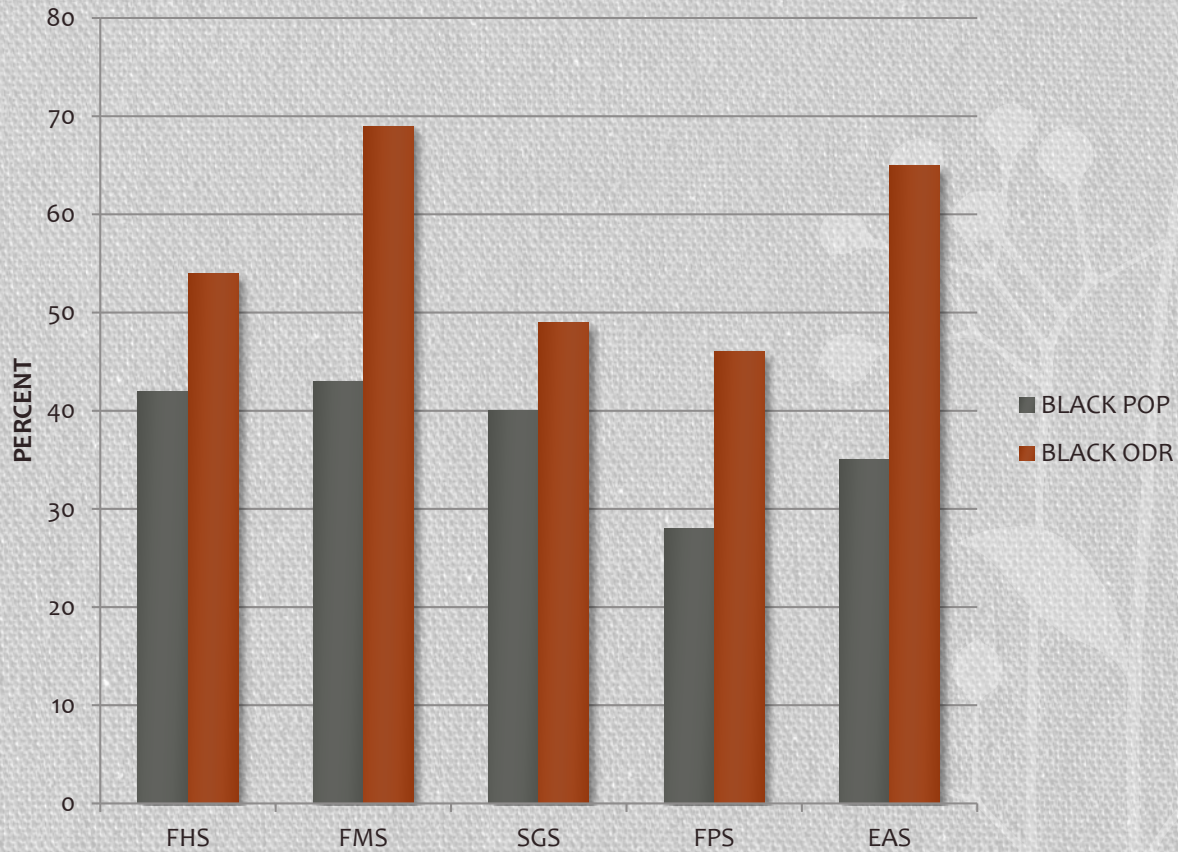
# Using PBIS Data for Disproportionality

- School year 2014-15
- Office Discipline Referrals by School and by Race/Ethnicity
- For students who had 2-5 ODRs
- We used the data for training and action planning for disproportionality with Building Administrators

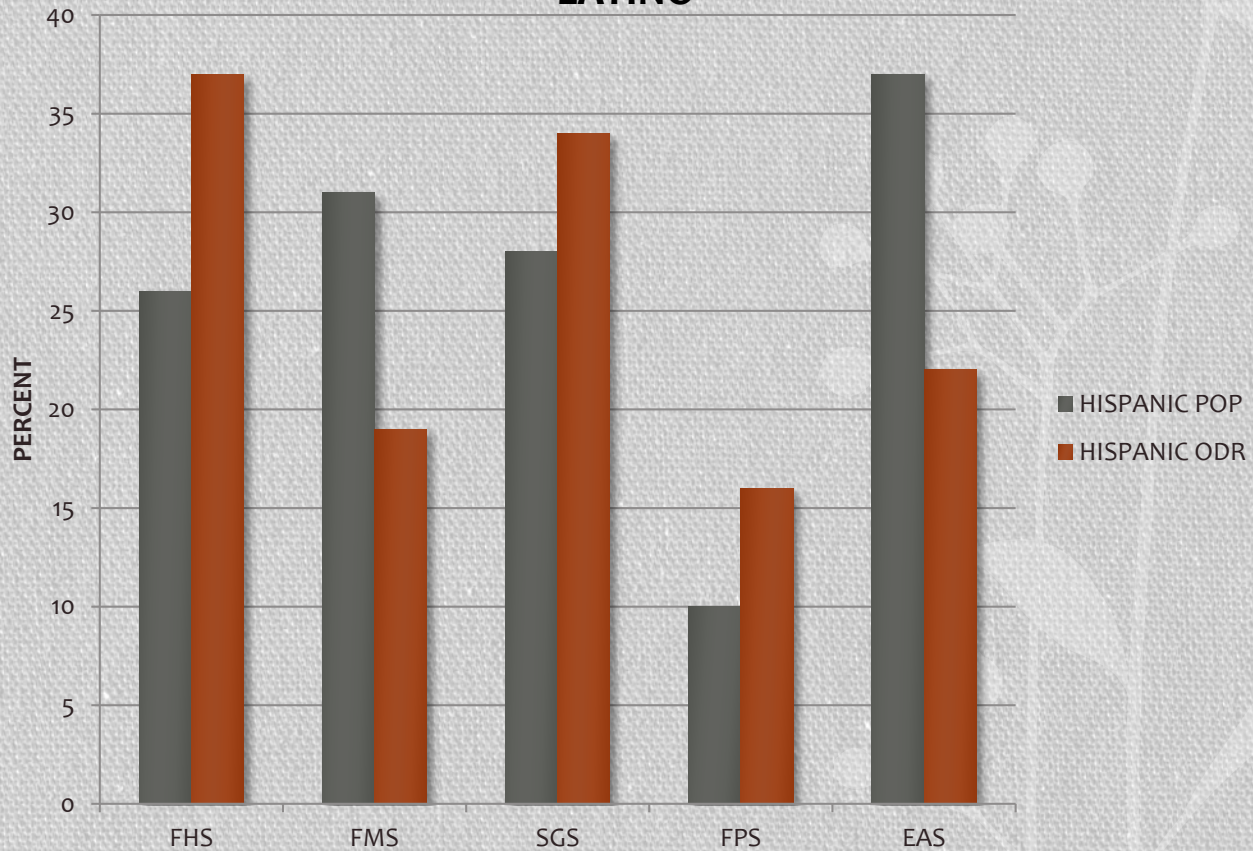
**2014-2015  
PERCENTAGE POPULATION & PERCENTAGE OF REFERRALS (2-5 ODRs)  
ASIAN**



**2014-2015  
PERCENTAGE POPULATION & PERCENTAGE OF REFERRALS (2-5 ODRs)  
BLACK**

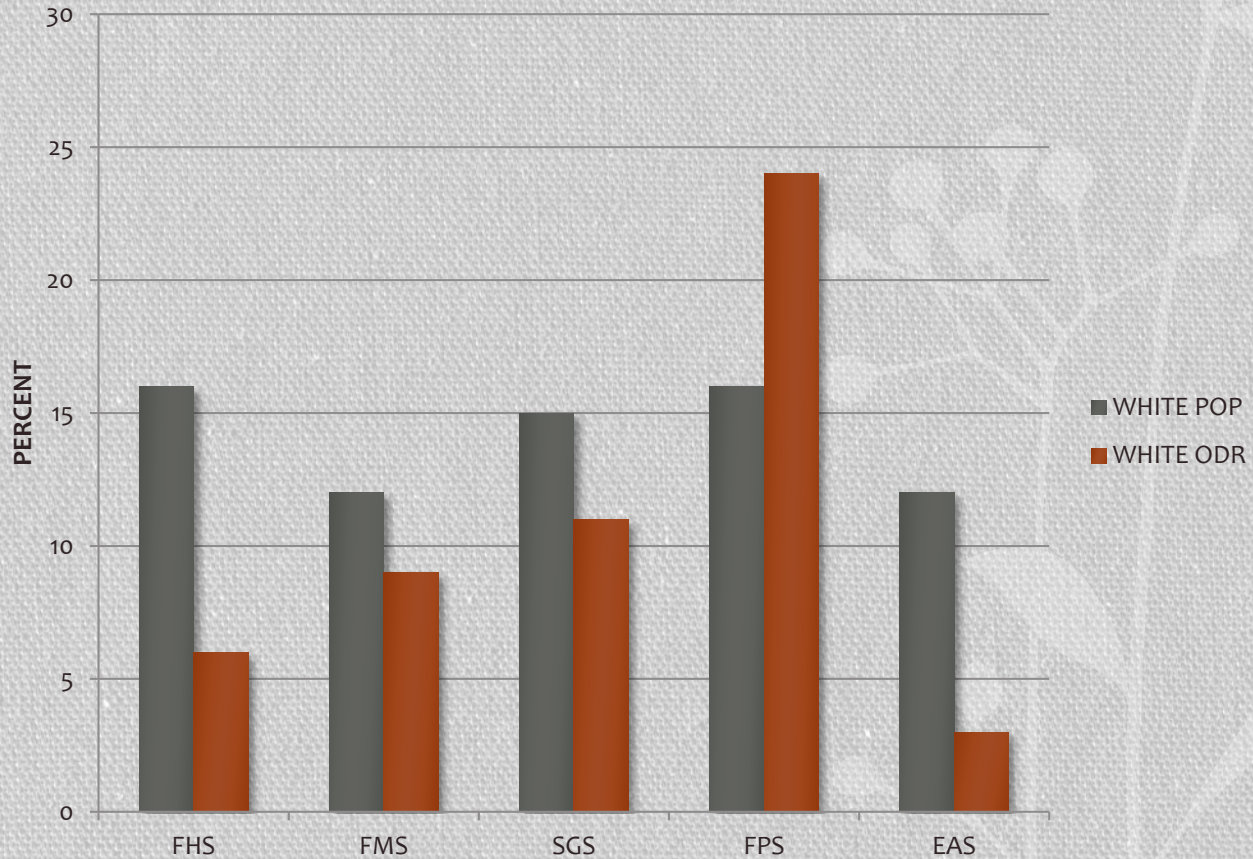


**2014-2015**  
**PERCENTAGE POPULATION & PERCENTAGE OF REFERRALS (2-5 ODRs)**  
**LATINO**





**2014-2015  
PERCENTAGE POPULATION & PERCENTAGE OF REFERRALS (2-5 ODRs)  
WHITE**





# Trainings

- Bias
- Cultural Awareness and Sensitivity
- Partnered with Rutgers University for COR training (Creating Opportunities through Relationships)
- Robert Jackson – workshops for students and staff on Cultural Awareness

Thank you!

Questions?

Contact information

Email: [smcneil@franklinboe.org](mailto:smcneil@franklinboe.org)

